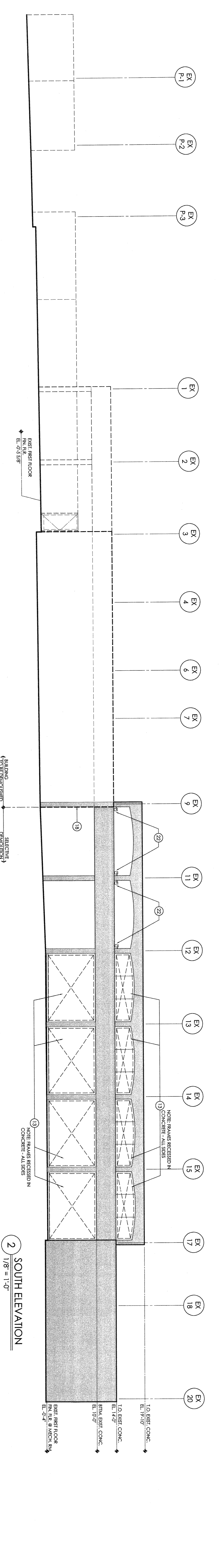
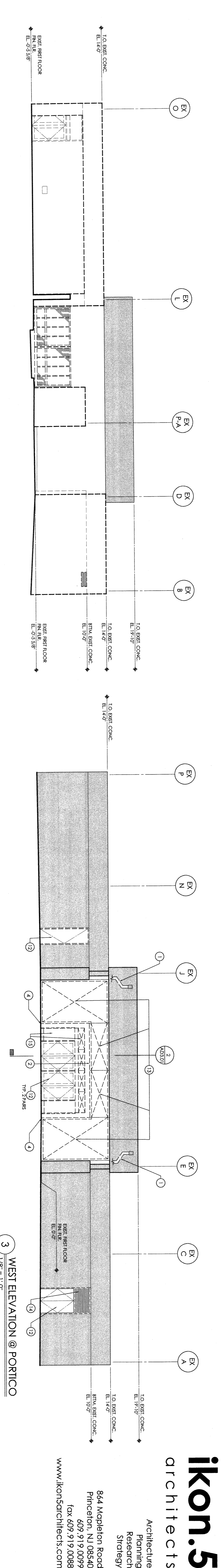


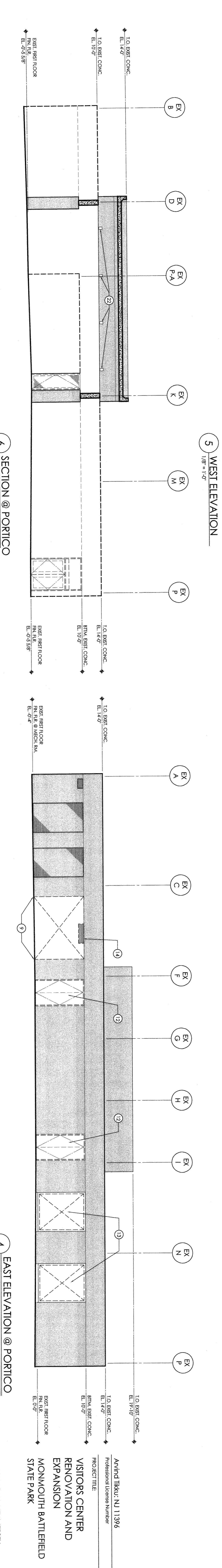
1 NORTH ELEVATION  
1/8" = 1'-0"



2 SOUTH ELEVATION  
1/8" = 1'-0"



3 WEST ELEVATION @ PORTICO  
1/8" = 1'-0"



4 EAST ELEVATION @ PORTICO  
1/8" = 1'-0"

6 SECTION @ PORTICO  
1/8" = 1'-0"

5 WEST ELEVATION  
1/8" = 1'-0"

DEMOLITION KEY PLAN:	DEMOLITION LEGEND	GENERAL DEMOLITION NOTES	KEYED DEMOLITION NOTES
	<ul style="list-style-type: none"> <li>EXISTING CONSTRUCTION TO BE REMOVED</li> <li>EXISTING FLOOR FINISH TO REMAIN</li> <li>EXISTING WALL CONSTRUCTION TO REMAIN</li> <li>EXTENT OF INTERIOR BRICK PAVERS SALVAGED FOR REINSTALLATION</li> <li>SPORT OF SALVAGE</li> <li>CONCRETE SLAB</li> <li>DEMOLITION KEY NOTE</li> <li>PHOTO REFERENCE SEE I/OG ADD-01 FOR PHOTOS</li> </ul>	<ul style="list-style-type: none"> <li>A. COORDINATE ALL DEMOLITION WITH NEW CONSTRUCTION DRAWINGS FOR STRUCTURE</li> <li>B. PROTECT ALL EXISTING TO REMAIN PARTITIONS, AND FINISHES, DURING CONSTRUCTION</li> <li>C. REFER TO DRAWING A2211, A2010 AND A2410 FOR ADDITIONAL ARCHITECTURAL DEMOLITION INFORMATION</li> <li>D. REFER TO MECHANICAL, ELECTRICAL, PLUMBING AND PENT FOR REINSTALLATION (RESIDENTIAL) ADDITIONAL INFORMATION</li> <li>E. SALVAGE CLEAN AND PREP EXISTING WALL BRICK FOR REINSTALLATION - QUANTITY AS REQD. REINSTALLATION</li> <li>F. SALVAGE CLEAN AND PREP 200' X 11' CHIMNECK BRICK PAVERS FOR REINSTALLATION</li> </ul>	<ul style="list-style-type: none"> <li>1 REMOVE DOWNPOUT</li> <li>2 REMOVE CEILING</li> <li>3 REMOVE GYPSUM BO CEILING AND SUPPORTS</li> <li>4 REMOVE GYPSUM WALL/NER</li> <li>5 REMOVE CONCRETE BEAM - SEE STRUCTURAL</li> <li>6 REMOVE TILE FLOOR</li> <li>7 REMOVE BRICK PAVERS &amp; SALVAGE CLEAN AND PREP FOR REINSTALLATION (RESIDENTIAL)</li> <li>8 REMOVE EXTERIOR WALL BRICK VENEER W/ REINSTALLATION</li> <li>9 REMOVE EXTERIOR WALL BRICK VENEER W/ REINSTALLATION</li> <li>10 REQUIRED TO REMOVE CONCRETE WALL</li> <li>11 REMOVE COUPLER PARTITION</li> <li>12 REMOVE DOOR FRAME, AND ASSOCIATED HARDWARE</li> <li>13 REMOVE WINDOW &amp; ALUMINUM FRAME</li> <li>14 REMOVE ALUMINUM COVER</li> <li>15 REMOVE WOOD RAILINGS &amp; SUPPORTS</li> <li>16 REMOVE BUILT IN MILLWORK, CASEWORK, CABINETS</li> <li>17 REMOVE EXISTING WALLS AND MATERIALS AT EXISTING CONCRETE COLUMN PRIOR TO MASS REMOVAL</li> <li>18 SALVAGE EXISTING WALLS AND MATERIALS AT EXISTING CONCRETE COLUMN PRIOR TO MASS REMOVAL</li> <li>19 SAWCUT CONCRETE SLAB FOR PLUMBING ITEMS</li> <li>20 REMOVE COATING DOOR &amp; ENCLOSURE STRUCTURE</li> </ul>

**ikon.5**  
architects

Architecture  
Planning  
Research  
Strategy

844 Mapleton Road  
Pinecliff, NJ 08840  
609.919.0079  
fax 609.919.0088  
www.ikon5architects.com

Avind Tikku, NJ 11396  
Professional License Number

PROJECT TITLE  
VISITORS CENTER  
EXPANSION AND  
MONMOUTH BATTLEFIELD  
STATE PARK

MANAALAPAN, NEW JERSEY  
PROJECT NO.: P108560

SHEET TITLE  
ARCHITECTURAL  
DEMOLITION  
ELEVATIONS

DATE: 10-03-2011  
DRAWN BY: IKON.5  
DRAWING NO.: AD4.01