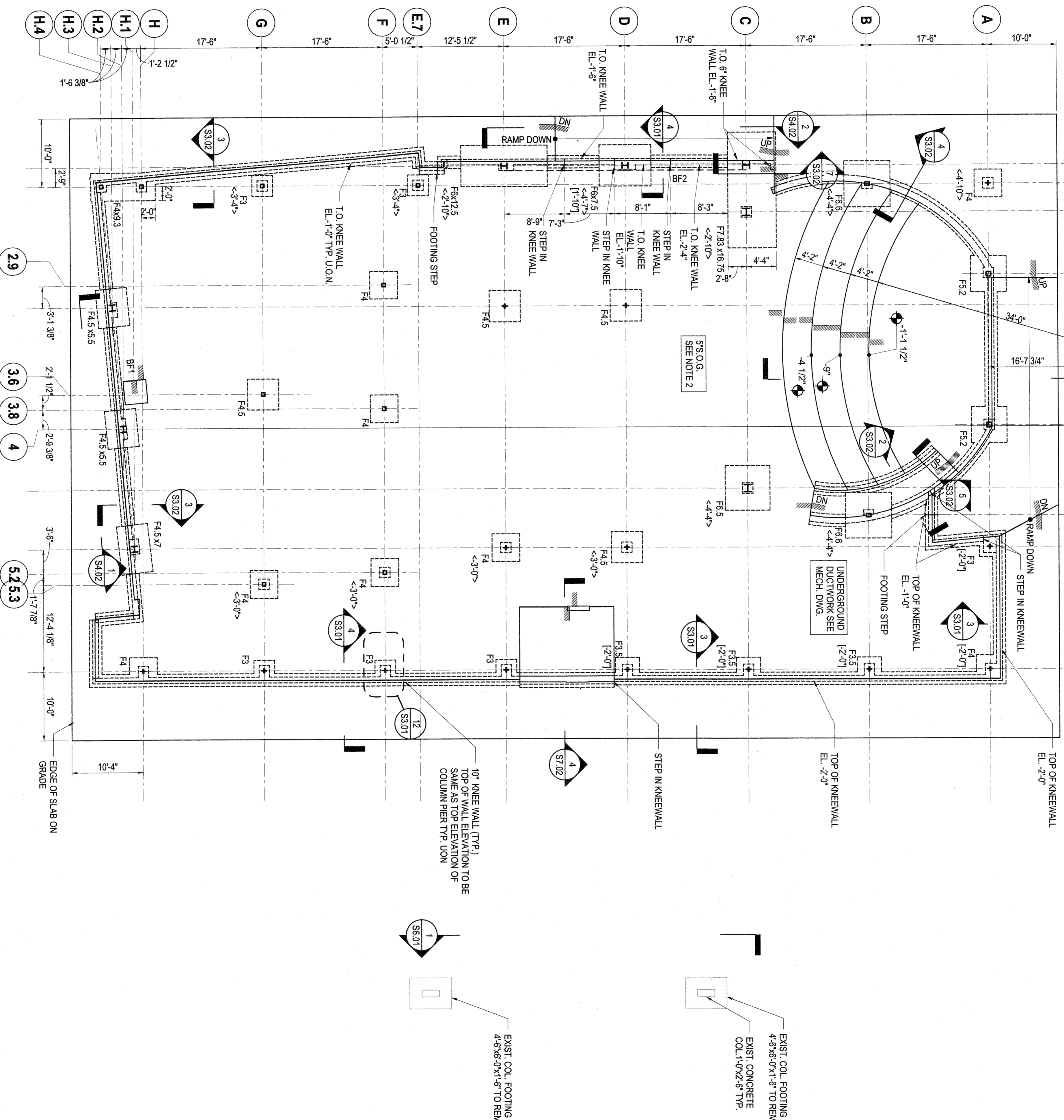


- NOTES:
1. TOP OF ARCHITECTURAL FINISHED FLOOR IS AT ELEVATION 0'-0" (ELEV. 16.543) TOP OF STRUCTURAL SLAB ON GRADE SHALL BE 1'-0" FROM ON PLAN. FINISHED FLOOR SHALL BE 1'-0" FROM ON PLAN. REFERENCED TO TOP OF FINISHED FLOOR U.O.N TYP.
  2. TYPICAL SLAB TO BE 5" THICK U.O.N. ON PLAN. SLAB SHALL BE REINFORCED WITH WWF #6@6X6X16X EACH WAY @ TOP
  3. TOP OF INTERIOR FOOTING, TOP OF KNEE WALL AND TOP OF PIER SHALL BE 1'-0" BELOW TOP OF FINISHED SLAB UNO. THIS <...> AS TOP OF SPREAD FOOTING ELEVATION AND [...] AS TOP OF PIER ELEVATION REFERENCED TO TOP OF FINISHED SLAB.
  4. SLAB ON GRADE SHALL HAVE A MINIMUM COMPRESSIVE STRENGTH (F<sub>c</sub>) OF 4,000 PSI.
  5. SPREAD FOOTING SHALL BE CENTERED ON COLUMNS. WALL FOOTING SHALL BE CENTERED ON WALLS.
  6. BOTTOM OF EXTERIOR FOOTING AND KNEE WALL FOOTING SHALL BE AT 4'-0" MIN. BELOW GRADE. TYP. UNO.
  7. FOR SEALED CONCRETE OR POLISHED CONCRETE (ALT #2) SEE SCHEDULES FOR EXACT LOCATION. SEE ARCH DIV FOR FINISHING REQUIREMENT.
  8. SEE ARCHITECTURAL DWG. FOR CAST-IN GLAZING SHOE PER ALTERNATE #3.
  9. FOR ADDITIONAL INFORMATION: FOR LOCATIONS OF SLAB OPENINGS, CURBS, PADS, ETC., REFER TO ARCH. DRAWINGS. UNDERGROUND DUCTWORKS SHALL BE VERIFIED WITH FINAL MECH SHOP DRAWINGS FOR FOUNDATION TYPICAL DETAILS REFER TO S3 SERIES DRAWINGS.
  10. FOR SCHEDULES REFER TO S4 SERIES DRAWINGS. FOR ELEVATIONS REFER TO S4 SERIES DRAWINGS FOR TYPICAL STEEL DETAILS REFER TO S5 SERIES DRAWINGS.
- SYMBOLS:  
 FX INDICATES TYPE OF SPREAD FOOTING  
 [Symbol] INDICATES STEPS IN SLAB ON GRADE  
 UP INDICATES SLOPE IN SLAB ON GRADE



REMOVE EXISTING STRUCTURE AS REQUIRED FOR NEW CONSTRUCTION SEE SD.00

