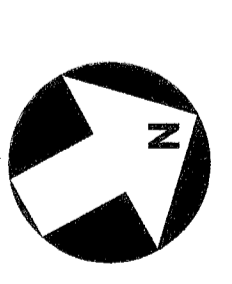
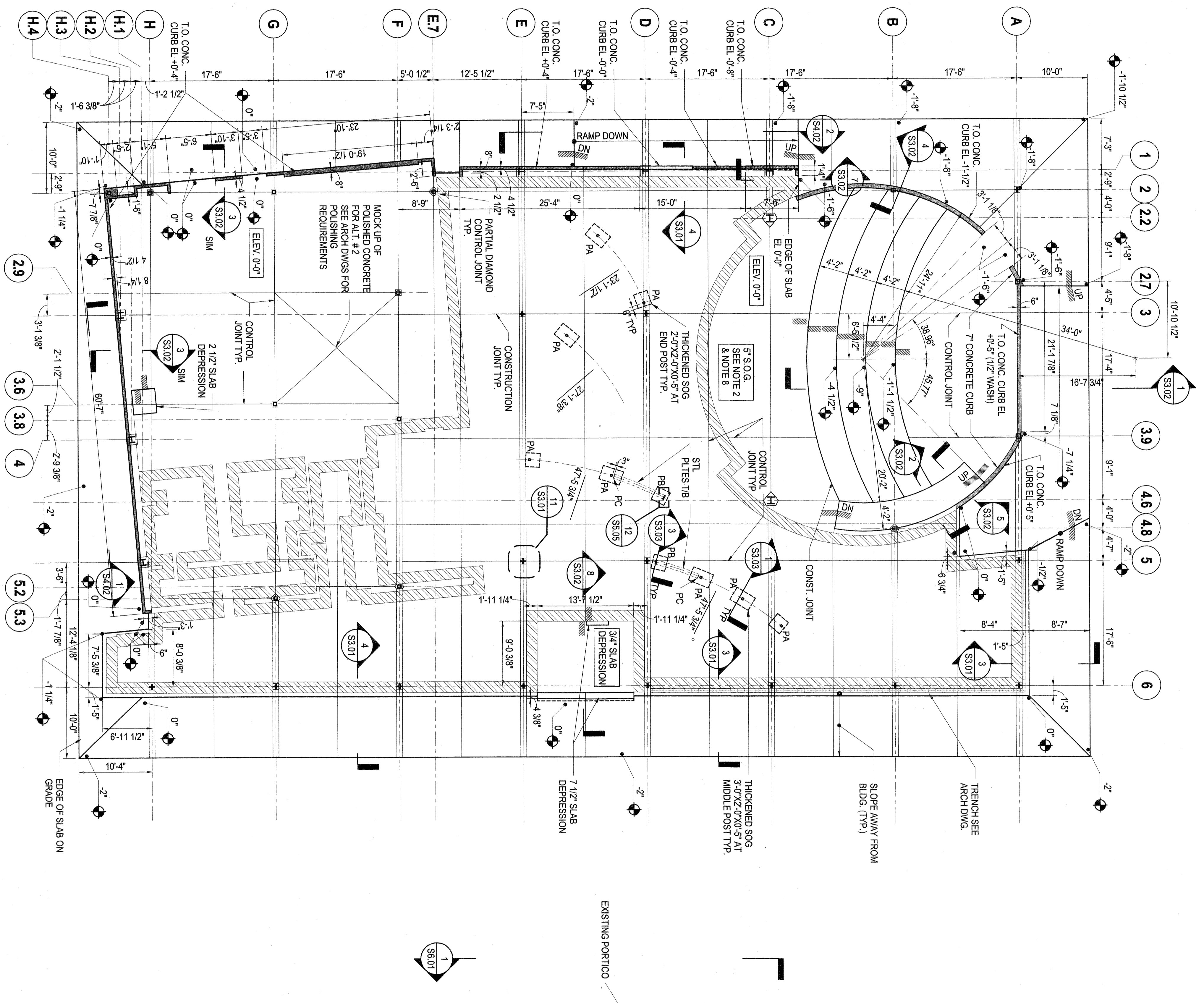


**NOTES:**

- TOP OF ARCHITECTURAL FINISHED FLOOR IS AT ELEVATION 0'-0" (ELEV. 161.451) TOP OF STRUCTURAL SLAB ON GRADE SHALL BE 0'-0" FROM TOP OF FINISHED FLOOR U.O.N. THIS ± ON PLAN REFERENCED TO TOP OF FINISHED FLOOR U.O.N TYP.
- TYPICAL SLAB TO BE 5" THICK U.O.N. ON PLAN. SLAB SHALL BE REINFORCED WITH W/4 @ 6"X6" W/6@6" EACH WAY @ TOP.
- TOP OF INTERIOR FOOTING TOP OF WEEB WALL AND TOP OF PIER SHALL BE 1'-0" BELOW TOP OF FINISHED SLAB AND [ ] AS TOP OF PIER ELEVATION REFERENCED TO TOP OF FINISHED SLAB.
- SLAB ON GRADE SHALL HAVE A MINIMUM COMPRESSIVE STRENGTH (f'<sub>c</sub>) OF 4,000 PSI.
- SPREAD FOOTING SHALL BE CENTERED ON WALLS. UO.N WALL FOOTING SHALL BE CENTERED ON WALLS. UO.N BOTTOM OF EXTERIOR FOOTING AND RAKE WALL FOOTING SHALL BE AT 4'-0" (MIN) BELOW GRADE.
- FOR SEALED CONCRETE OR POLISHED CONCRETE (A.I.T. #2), SEE ARCH DWS FOR EXACT LOCATION. SEE ARCH DWS FOR POLISHING REQUIREMENT.
- SEE ARCHITECTURAL DWG. FOR CAST-IN GLAZING SHOE PER ALTERNATE #3.
- FOR ADDITIONAL INFORMATION, FOR LOCATIONS OF SLAB OPENINGS, CURBS, PADS, ETC., REFER TO ARCH. DRAWINGS.
- FOR FOUNDATION TYPICAL DETAILS REFER TO S3 SERIES DRAWINGS.
- FOR SCHEDULES REFER TO S4 SERIES DRAWINGS.
- FOR ELEVATIONS REFER TO S4 SERIES DRAWINGS.
- FOR TYPICAL STEEL DETAILS REFER TO S5 SERIES DRAWINGS.

- 10. SYMBOLS:**
- FX INDICATES TYPE OF SPREAD FOOTING
  - INDICATES STEPS IN SLAB ON GRADE
  - INDICATES SLOPE IN SLAB ON GRADE
  - INDICATES TRENCHES
  - FOR BASE BID INDICATES SEALED SLAB ON GRADE CONCRETE
  - FOR ALTERNATE #2 INDICATES POLISHED SLAB ON GRADE CONCRETE

- PA INDICATES HSS 3 1/2X3 1/2X1/4" POST SEE ARCH DWG FOR LOCATION
- PB INDICATES BUILT UP POST SEE ARCH DWG FOR LOCATION
- PC INDICATED STL PLATE 1/2X7 1/4" POST SEE ARCH FOR LOCATION



MANALAPAN, NEW JERSEY  
PROJECT NO.: P1035-00  
SHEET TITLE:  
**SLAB ON GRADE**

**Thornton Tomasetti**  
Thornton Tomasetti, Inc.  
744 Broad Street, 29th Floor  
Princeton, NJ 08540  
609.919.0099  
fax: 609.919.0088  
www.ikon5architects.com

**ikon.5** architects  
Architecture  
Planning  
Research  
Strategy  
844 Mapleton Road  
Princeton, NJ 08540  
609.919.0099  
fax: 609.919.0088  
T 973.286.6100 F 973.286.6101