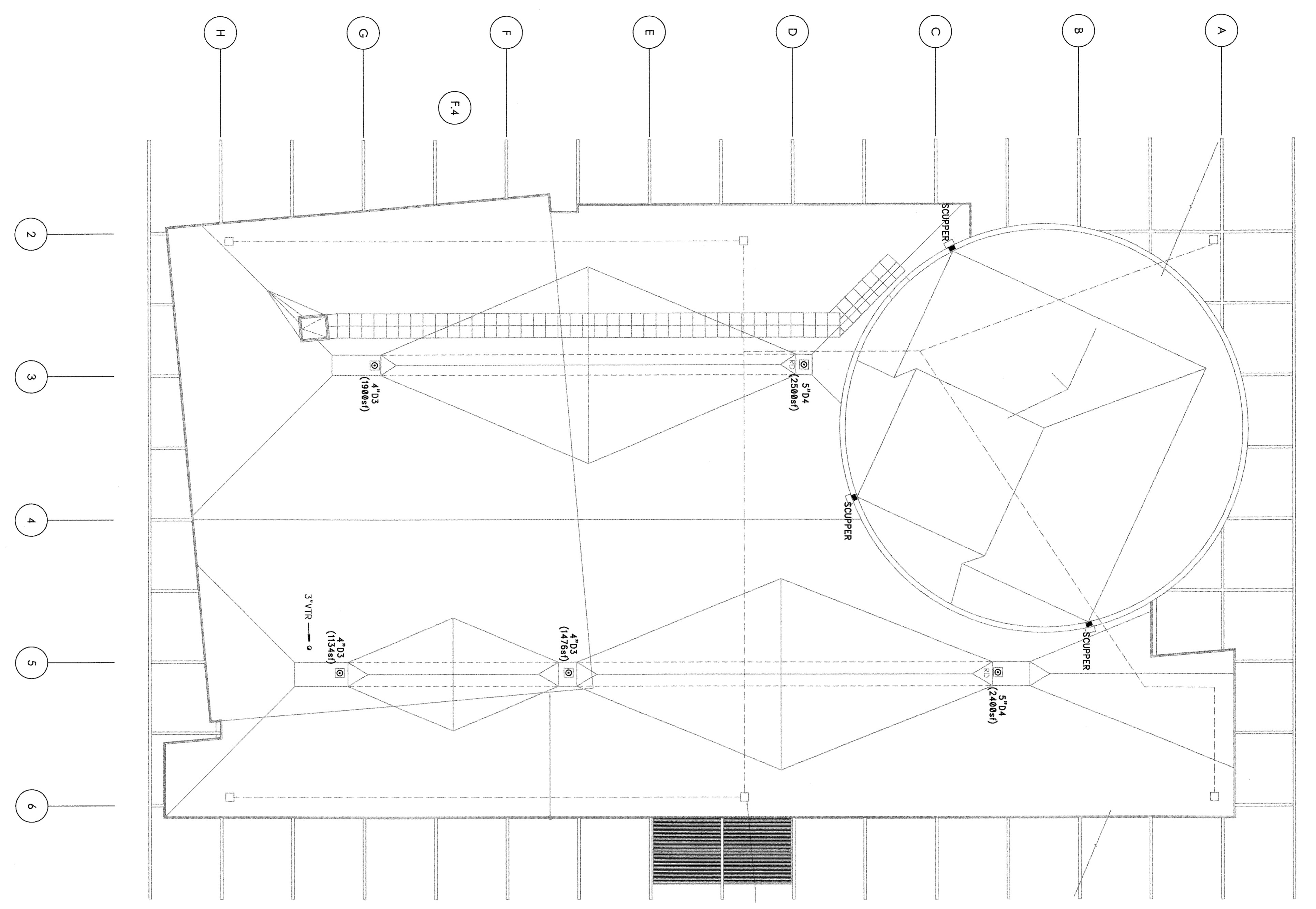


PLUMBING NOTES:  
1. ALL STORM & SANITARY WASTE PIPING UP TO 2\"/>



PLUMBING NOTE:  
STORM AND SANITARY PIPING IS GOING PER NATIONAL STANDARD  
PLUMBING CODE TABLE 5.4.1.1 & 5.4.1.2 AT A RAINFALL RATE OF  
5\"/>

2 ROOF PLAN - PLUMBING  
P1.01 | P1.01 SCALE: 1/8" = 1'-0"

1 EXISTING VISITOR'S CENTER  
ROOF PLAN - PLUMBING  
P1.01 | P1.01 SCALE: 1/8" = 1'-0"